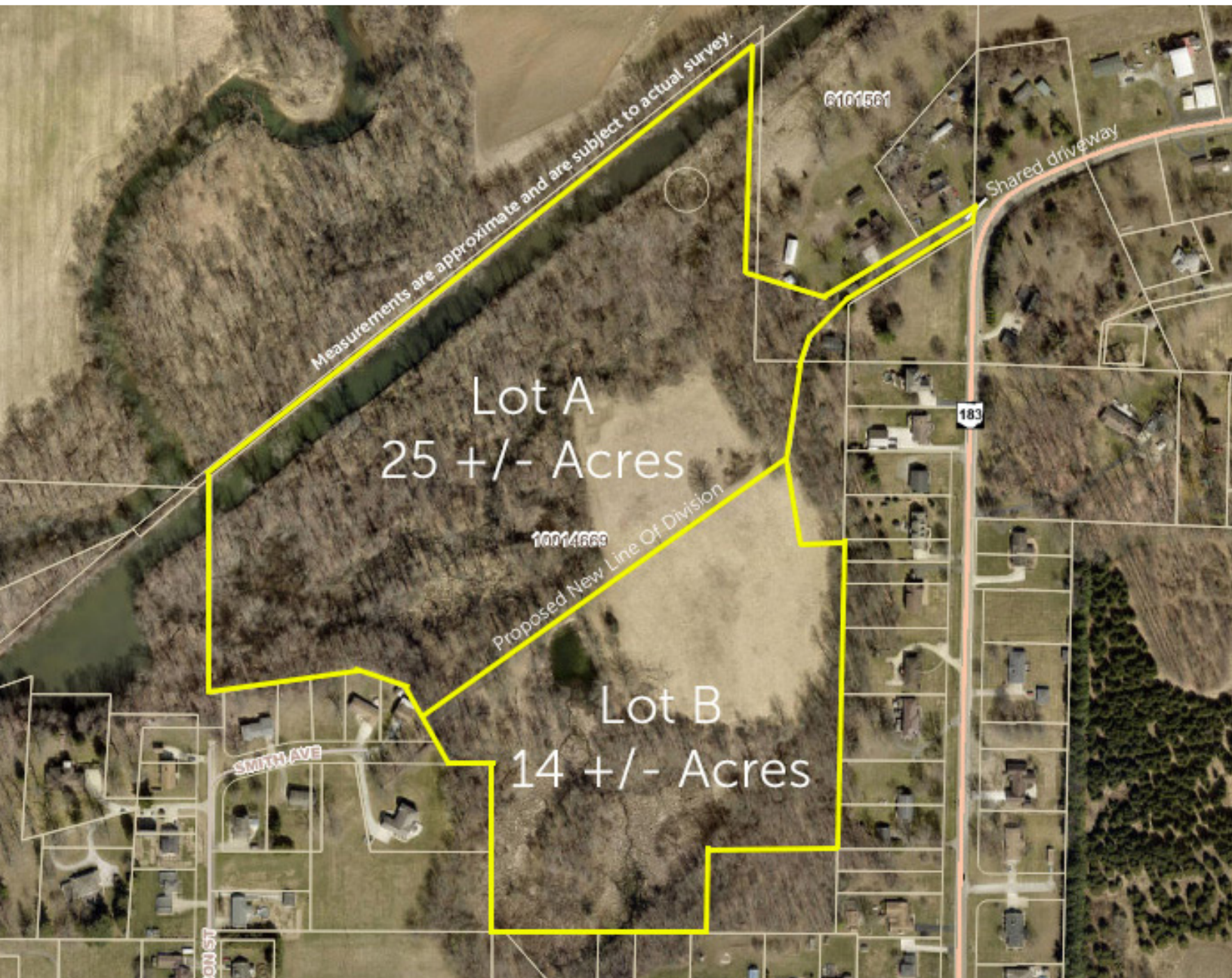


# ABSOLUTE AUCTION

SATURDAY, JUNE 1, 2024, 10:30 AM



LAND



Real Estate offers approximately 39 acres of recreational and agricultural land that adjoins Sandy Creek.  
Parcel A: Approximately 25 acres of open and wooded land.  
Parcel B: Approximately 14 acres of open and wooded land.  
These parcels will be offered separate then together and will sell whichever way brings the most. If sold separate there will be a shared driveway to access both parcels.

Auctioneer's note: Please call before walking the property.

Terms On Real Estate: 15% down auction day, balance due at closing. A 10% buyer's premium will be added to the highest bid to establish the purchase price. Any desired inspections must be made prior to bidding. All information contained herein was derived from sources believed to be correct. Information is believed to be accurate but not guaranteed. Property to be offered as a Multi Par auction and sold whichever way it brings the most.

## EXCITING LAND AUCTION

Nice Mixture Of Open And Wooded Land

Stark County, Sandy Township, Sandy Valley Schools

MINERVA RD.  
MAGNOLIA, OH 44643



**RANDY L. COMPTON**  
AUCTIONEER/REALTOR®  
330.704.5702  
rcompton@kikocompany.com



**JAMES PIETRO**  
REALTOR®  
330.447.6497  
jpietro@kikocompany.com

[www.kikoauctions.com](http://www.kikoauctions.com) | 800.533.5456

Information is believed to be accurate but not guaranteed.  
KIKO Auctioneers



Scan for auction details, including directions.

Absolute Auction.  
All sells to the highest bidders on location.